

**SWTC DAYCARE BOILER REPLACEMENT**  
1800 BRONSON BLVD FENNIMOR, WI 53809

**SOUTHWEST TECHNICAL COLLEGE**

**IMEG**  
1800 DEMING WAY SUITE 200 MIDDLETON, WI 53562  
PH: 608.223.9600 FAX: 608.838.0415 www.imegcorp.com

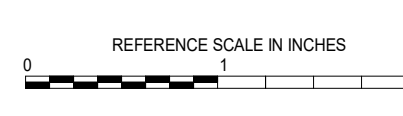
PROFESSIONAL SEAL

KEY PLAN

AGENCY APPROVAL

DISCLAIMER

IMEG CORP. RESERVES PROPRIETARY RIGHTS, INCLUDING COPYRIGHTS, TO THE DRAWING AND THE DATA SHOWN THEREON. NO COPYING OR REPRODUCTION OF ANY PART OF THIS DRAWING OR THE DATA SHOWN THEREON SHALL BE USED OR REPRODUCED FOR ANY OTHER PROJECT WITHOUT THE EXPRESS WRITTEN APPROVAL AND PARTICIPATION OF IMEG CORP. © 2018 IMEG CORP.



REVISIONS

No.	Date	Revision / Issue

SHEET INFORMATION

Issue	Construction Set
Date	12/12/2018
Job Number	18001186.00
Drawn	PAUHAN
Checked	PAUVAJ

SHEET TITLE

**MECHANICAL COVERSHEET**

SCALE

Scale: **As Indicated**

SHEET NUMBER

**M100**

**VIEW KEY**

NAME: 10'-0" LEVEL NAME: HEIGHT ABOVE PROJECT 0'-0"

INDICATES NOTE USED TO DESCRIBE ADDITIONAL INFORMATION ABOUT WORK REQUIRED, SPECIFIC TO THE SHEET AND/OR DETAIL.

INDICATES DIRECTION OF TRUE NORTH

PLAN OR DETAIL NUMBER

PLAN OR DETAIL NAME

**VIEW NAME**

1/8" = 1'-0"

PLAN OR DETAIL SCALE

**LINE TYPE KEY:**

- NEW WORK BY THIS CONTRACTOR (DARK SOLID LINE)
- NEW WORK UNDER FLOOR OR UNDERGROUND BY THIS CONTRACTOR (DARK LONG DASHED LINE)
- NEW WORK BY OTHERS AND/OR EXISTING TO REMAIN (LIGHT SOLID LINE)
- EXISTING TO BE REMOVED BY THIS CONTRACTOR (DARK SHORT DASHED LINE)

**CONTRACTOR ABBREVIATION KEY**

ABBR:	DESCRIPTION:
A.C.	ASBESTOS ABATEMENT CONTRACTOR
A.T.C.	AUTOMATIC TEMPERATURE CONTROL CONTRACTOR
A.V.C.	AUDIO/VISUAL CONTRACTOR
C.C.	CIVIL CONTRACTOR
C.M.	CONSTRUCTION MANAGER
E.C.	ELECTRICAL CONTRACTOR
F.P.C.	FIRE PROTECTION CONTRACTOR
F.S.C.	FOOD SERVICE CONTRACTOR
G.C.	GENERAL CONTRACTOR
H.C.	HEATING CONTRACTOR
M.C.	MECHANICAL CONTRACTOR
N.C.C.	NURSE CALL CONTRACTOR
P.C.	PLUMBING CONTRACTOR
S.C.	SECURITY CONTRACTOR
T.C.	TECHNOLOGY CONTRACTOR
T.C.C.	TEMPERATURE CONTROLS CONTRACTOR
V.C.	VENTILATION CONTRACTOR

**MECHANICAL ABBREVIATION KEY**

ABBR:	DESCRIPTION:
AD	ACCESS DOOR
AFF	ABOVE FINISHED FLOOR
C	COMMON
CO	CLEANOUT
CD-E	CEILING DIFFUSER - EXISTING
CFSD	CONTROL/FIRE/SMOKE DAMPER
DPG (0-2")	DIFFERENTIAL PRESSURE GAUGE (RANGE)
DPS	DIFFERENTIAL PRESSURE SWITCH
EA	EXHAUST/RELIEF AIR
ECFSD	EXISTING CONTROL FIRE SMOKE DAMPER
EFD	EXISTING FIRE DAMPER
EFSD	EXISTING FIRE SMOKE DAMPER
EP	ELECTRICAL TO PNEUMATIC VALVE
ESD	EXISTING SMOKE DAMPER
FD	FIRE DAMPER
FOB	FLAT ON BOTTOM
FOT	FLAT ON TOP
FSD	FIRE/SMOKE DAMPER
MA	MIXED AIR
MV	MIXING VALVE
NC	NEW CONNECTION
N.C.	NORMALLY CLOSED
NIC	NOT IN CONTRACT
N.O.	NORMALLY OPEN
OA	OUTSIDE AIR
PS	PRESSURE SWITCH
RA	RETURN AIR
SA	SUPPLY AIR
SD	SMOKE DAMPER
TAB	TERMINAL AIR BOX
TD	TRANSFER DUCT
TYP	TYPICAL
UC-1	DOOR UNDERCUT BY OTHERS (1" TYPICAL)
UNO	UNLESS NOTED OTHERWISE

**MECHANICAL SYMBOL LIST**

NOT ALL SYMBOLS MAY APPLY.

SYMBOL:	DESCRIPTION:
[Symbol]	PIPE CAP
[Symbol]	PIPE DOWN
[Symbol]	PIPE UP OR UP/DOWN
[Symbol]	PITCH PIPE IN DIRECTION
[Symbol]	DIRECTION OF FLOW IN PIPE
[Symbol]	ROUTE TO DRAIN
[Symbol]	NEW CONNECTION
[Symbol]	DIELECTRIC CONNECTION
[Symbol]	UNION/FLANGE
[Symbol]	SHUTOFF VALVE NORMALLY OPEN
[Symbol]	SHUTOFF VALVE NORMALLY CLOSED
[Symbol]	THROTTLING VALVE
[Symbol]	BALANCING VALVE (NUMBER INDICATES GPM)
[Symbol]	AUTOMATIC BALANCING VALVE
[Symbol]	MIXING VALVE
[Symbol]	CONTROL VALVE (THREE-WAY)
[Symbol]	CONTROL VALVE (TWO-WAY)
[Symbol]	SOLENOID VALVE
[Symbol]	CHECK VALVE
[Symbol]	SAFETY/RELIEF VALVE
[Symbol]	PRESSURE REDUCING VALVE (LIQUID/GAS)
[Symbol]	PRESSURE REDUCING VALVE (STEAM)
[Symbol]	TRIPLE DUTY VALVE (ANGLE TYPE)
[Symbol]	TRIPLE DUTY VALVE (IN-LINE TYPE)
[Symbol]	PUMP
[Symbol]	VACUUM BREAKER
[Symbol]	"WYE" - STRAINER
[Symbol]	"WYE" - STRAINER W/SHUTOFF VALVE AND HOSE CONNECTION WITH CAP
[Symbol]	BASKET STRAINER
[Symbol]	FLEXIBLE CONNECTION
[Symbol]	PRESSURE/TEMPERATURE TEST PLUG
[Symbol]	REDUCER - REFERENCE SPECIFICATION FOR CONCENTRIC/ECCENTRIC AND FOOT/FOB
[Symbol]	SUCTION DIFFUSER WITH SUPPORT FOOT
[Symbol]	AUTOMATIC AIR VENT
[Symbol]	MANUAL AIR VENT
[Symbol]	DRAIN VALVE WITH HOSE CONNECTION AND CAP
[Symbol]	PRESSURE SENSOR (FURNISHED WITH BALL VALVE)
[Symbol]	PRESSURE GAUGE (FURNISHED WITH BALL VALVE)
[Symbol]	DIFFERENTIAL PRESSURE SENSOR
[Symbol]	STATIC SWITCH
[Symbol]	FLOW METER
[Symbol]	FLOW SWITCH
[Symbol]	FLOW SENSOR
[Symbol]	STEAM TRAP (REFER TO SCHEDULE)
[Symbol]	F&T STEAM TRAP (REFER TO SCHEDULE)
[Symbol]	INVERTED BUCKET STEAM TRAP (REFER TO SCHEDULE)
[Symbol]	ALIGNMENT GUIDE
[Symbol]	PIPE ANCHOR
[Symbol]	EXPANSION JOINT
[Symbol]	METER

**MECHANICAL SYMBOL LIST**

NOT ALL SYMBOLS MAY APPLY.

SYMBOL:	DESCRIPTION:
[Symbol]	DIRECTION OF AIR FLOW
[Symbol]	FLEXIBLE DUCT
[Symbol]	MANUAL VOLUME DAMPER
[Symbol]	RISE IN DIRECTION OF AIR FLOW
[Symbol]	DROP IN DIRECTION OF AIR FLOW
[Symbol]	DUCT CAP
[Symbol]	DUCT DOWN
[Symbol]	DUCT UP
[Symbol]	SUPPLY/OUTSIDE AIR DUCT SECTION
[Symbol]	RETURN AIR DUCT SECTION
[Symbol]	EXHAUST/RELIEF AIR DUCT SECTION
[Symbol]	4-WAY DIFFUSER WITH BLANKOFF IN ONE DIRECTION
[Symbol]	AIR TERMINAL PROPERTIES SYMBOL NECK SIZE/CFM
[Symbol]	TERMINAL AIR BOX (REFER TO SCHEDULE)
[Symbol]	TERMINAL AIR BOX W/REHEAT COIL (REFER TO SCHEDULE)
[Symbol]	SERIES FAN POWERED TERMINAL AIR BOX W/REHEAT COIL (REFER TO SCHEDULE)
[Symbol]	PARALLEL FAN POWERED TERMINAL AIR BOX W/REHEAT COIL (REFER TO SCHEDULE)
[Symbol]	HUMIDIFIER
[Symbol]	OPPOSED BLADE DAMPER (REFER TO SCHEDULE)
[Symbol]	PARALLEL BLADE DAMPER (REFER TO SCHEDULE)
[Symbol]	DIFFERENTIAL PRESSURE SENSOR
[Symbol]	HUMIDISTAT SENSOR
[Symbol]	HUMIDISTAT / SENSOR
[Symbol]	CARBON MONOXIDE SENSOR
[Symbol]	CARBON DIOXIDE SENSOR
[Symbol]	OCCUPANCY SENSOR
[Symbol]	PRESSURE SENSOR/MONITOR
[Symbol]	PRESSURE SENSOR (DUCT MOUNTED)
[Symbol]	THERMOSTAT/SENSOR
[Symbol]	TEMPERATURE SENSOR
[Symbol]	THERMOSTAT/SENSOR WITH HEAVY DUTY ENCLOSURE
[Symbol]	TEMPERATURE SENSOR WITH WELL
[Symbol]	THERMOMETER WITH WELL (DIAL TYPE)
[Symbol]	THERMOMETER WITH WELL (FILLED TYPE)
[Symbol]	AIRFLOW MEASUREMENT SYMBOL XX - AHU SYMBOL Y - SEQUENTIAL NUMBER

**MECHANICAL SHEET INDEX**

M100	MECHANICAL COVERSHEET
M101	FIRST FLOOR PLAN - MECHANICAL-DEMOLITION
M201	FIRST FLOOR PLAN - MECHANICAL
M301	ENLARGED FLOOR PLANS - MECHANICAL

**MECHANICAL RENOVATION NOTES:**

- THESE NOTES APPLY TO ALL MECHANICAL SHEETS AND TRADES, INCLUDING BUT NOT LIMITED TO, VENTILATION, PIPING AND TEMPERATURE CONTROL.
- EXISTING CONDITIONS ARE SHOWN BASED ON INFORMATION OBTAINED FROM FIELD SURVEYS, EXISTING BUILDING DOCUMENTS, AND STAFF. VERIFY EXISTING CONDITIONS AND REPORT ANY CONFLICTS BEFORE PROCEEDING.
  - NOT ALL EXISTING DUCTWORK AND PIPING IS SHOWN. VERIFY EXISTING CONDITIONS BEFORE STARTING WORK. NOTIFY ENGINEER OF ANY CONFLICTS WITH NEW WORK.
  - FIELD VERIFY THE AVAILABLE CLEARANCES FOR PIPING BEFORE FABRICATION. RISES AND DROPS MAY BE NECESSARY BECAUSE OF EXISTING FIELD CONDITIONS.
  - EACH CONTRACTOR SHALL FIELD VERIFY ACCESSIBILITY TO THE AREA OF HIS WORK AND SHALL NOTIFY THE ARCHITECT IMMEDIATELY IF OTHER UTILITIES ARE REQUIRED TO BE REMOVED OR RELOCATED TO ALLOW ACCESS TO HIS AREA OF WORK.
  - THE CONTRACTOR IS RESPONSIBLE FOR REMOVAL AND REPLACEMENT OF CEILINGS, CEILING TILES, AND CEILING GRIDS ASSOCIATED WITH AREAS OF WORK BY ALL CONTRACTORS. NOTIFY THE ENGINEER OF AFFECTED AREAS PRIOR TO BIDDING.
  - WHERE EXISTING MECHANICAL SYSTEMS ARE LOCATED IN AREAS THAT CONFLICT WITH NEW EQUIPMENT, PIPING, OR DUCTWORK TO BE INSTALLED, EACH CONTRACTOR SHALL EITHER ARRANGE NEW EQUIPMENT, PIPING, OR DUCTWORK IN SUCH A FASHION THAT IT DOES NOT CONFLICT WITH EXISTING SYSTEMS, OR REWORK EXISTING MECHANICAL SYSTEMS TO ALLOW FOR INSTALLATION OF NEW EQUIPMENT, PIPING, OR DUCTWORK.
  - PROVIDE TEMPORARY CONNECTIONS TO MAINTAIN EXISTING SYSTEMS IN SERVICE DURING CONSTRUCTION. MAINTAIN ACCESS TO EXISTING MECHANICAL INSTALLATIONS THAT REMAIN ACTIVE.
  - OBTAIN PERMISSION FROM OWNER BEFORE SHUTTING DOWN ANY SYSTEM FOR ANY REASON. MAINTAIN SERVICE TO ALL COMPONENTS THAT ARE TO REMAIN UNTIL NEW SYSTEMS ARE INSTALLED.

**TEMPERATURE CONTROL GENERAL NOTES:**

- CONTROL CONTRACTOR SHALL BE TRANE CONTROLS.
- REFER TO EQUIPMENT SCHEDULES TO CROSS REFERENCE WHICH CONTROL DIAGRAMS APPLY TO WHICH ITEMS OF EQUIPMENT.
- EACH D.I., D.O., A.I. AND A.O. POINT SHOWN FOR ALL CONTROL DIAGRAMS SHALL BE DISCRETE FROM ALL OTHER POINTS EXCEPT AS SPECIFICALLY NOTED.
- ALL WIRING, CONTROL COMPONENTS, DEVICES AND PROGRAMMING AS REQUIRED PER THIS PLAN SET SHALL BE PROVIDED BY THE TCC UNLESS SPECIFICALLY NOTED OTHERWISE.
- ALL CONTROL COMPONENTS SUCH AS RELAYS, SWITCHES, DDC CONTROLLERS, ETC. SHALL BE MOUNTED IN STEEL ENCLOSURES WITH STEEL MOUNTING BACKPLATES PER SPECIFICATION 23 09 00.
- TCC SHALL PROVIDE ALL CONTROL COMPONENTS AND ACCESSORIES AS REQUIRED FOR EQUIPMENT TO BE CONTROLLED AS DESCRIBED IN THE PLAN SET REGARDLESS OF WHETHER ALL CONTROL COMPONENTS OR POINTS ARE SHOWN.

**MECHANICAL GENERAL NOTES:**

- THESE NOTES APPLY TO ALL MECHANICAL SHEETS AND TRADES, INCLUDING BUT NOT LIMITED TO, VENTILATION, PIPING AND TEMPERATURE CONTROL.
- DRAWINGS SHOWING LOCATIONS OF EQUIPMENT, DUCTWORK, PIPING, ETC. ARE DIAGRAMMATIC AND MAY NOT ALWAYS REFLECT EXACT INSTALLATION CONDITIONS. DRAWINGS SHOW THE GENERAL ARRANGEMENT OF DUCTWORK, PIPING, EQUIPMENT, ETC., AND MAY NOT INCLUDE ALL OFFSETS AND FITTINGS REQUIRED FOR COMPLETE INSTALLATION. THE DRAWINGS SHALL BE FOLLOWED AS CLOSELY AS ACTUAL BUILDING CONDITION AT SITE. REVIEW ALL DRAWINGS, INCLUDING THOSE OF OTHER TRADES, PHYSICALLY AT SITE. REVIEW ALL DRAWINGS, INCLUDING THOSE OF OTHER TRADES.
  - DO NOT SCALE DRAWINGS. VERIFY ALL DIMENSIONS AND CLEARANCES FROM ARCHITECTURAL, STRUCTURAL, SUBMITTALS, AND OTHER APPROPRIATE DRAWINGS OR SPECIFICATIONS.
  - COORDINATE ALL WORK WITH ALL OTHER TRADES PRIOR TO INSTALLATION TO PROVIDE CLEARANCES REQUIRED FOR OPERATION, MAINTENANCE, CODE COMPLIANCE, AND TO VERIFY NON-INTERFERENCE WITH OTHER WORK. DO NOT FABRICATE PRIOR TO VERIFICATION OF NECESSARY CLEARANCES FOR ALL TRADES. BRING ANY INTERFERENCES OR CONFLICTS TO THE ATTENTION OF THE ARCHITECT/ENGINEER BEFORE PROCEEDING WITH FABRICATION OR EQUIPMENT ORDERS.
  - REVIEW SPACE REQUIREMENTS OF EQUIPMENT SPECIFIED OR SUBSTITUTED AND MAKE REASONABLE ACCOMMODATIONS IN LAYOUT AND POSITIONING TO PROVIDE PROPER ACCESS.
  - ANY CHANGES REQUIRED TO ELIMINATE CONFLICTS OR THAT RESULT FROM A FAILURE TO COORDINATE SHALL BE MADE BY THE CONTRACTOR WITHOUT ADDITIONAL COST OR EXPENSE TO OTHERS.
  - EACH CONTRACTOR IS RESPONSIBLE FOR ALL COSTS ASSOCIATED WITH ELECTRICAL CHANGES REQUIRED FOR EQUIPMENT PROPOSED THAT DIFFERS FROM THE BASIS OF DESIGN.
  - EACH CONTRACTOR IS RESPONSIBLE FOR DAMAGE CAUSED BY THEIR ACTIONS TO WALLS, FLOORS, CEILINGS, AND ROOFS. THE CONTRACTOR WHOSE WORK CAUSES DAMAGE IS RESPONSIBLE FOR PATCHING TO MATCH ORIGINAL CONSTRUCTION, FIRE RATING, AND FINISH.
  - IN AREAS WITH DRYWALL CEILINGS COORDINATE LOCATIONS OF ACCESS PANELS WITH THE GC FOR ACCESS TO VALVES, DUCTWORK ACCESSORIES, DAMPERS, ETC. COORDINATE PANEL TYPE AND COLOR WITH ARCHITECT. NOTIFY THE GC OF THE REQUIRED ACCESS PANELS PRIOR TO BIDDING.
  - SEAL ALL WALL AND ROOF PENETRATIONS AIRTIGHT WHERE CONDUITS, PIPING, AND DUCTS PENETRATE. PENETRATIONS THROUGH EXTERIOR WALLS AND ROOF SHALL BE SEALED AIRTIGHT WITH WATERPROOFING MATERIALS RECOMMENDED BY MANUFACTURER FOR OUTDOOR USE.
  - CAULK ALL PIPE AND DUCT PENETRATIONS OF FULL HEIGHT NON-FIRE RATED WALL, PARTITION, FLOOR, AND ROOF ASSEMBLIES. THIS IS ESSENTIAL TO PREVENT NOISE TRANSMISSION FROM ONE ROOM TO ANOTHER AND TO PROVIDE THE DESIRED NO LEVELS WITHIN ROOMS.
  - WHERE PIPES AND DUCTS ARE SHOWN TO PENETRATE FLOORS, PROVIDE SLEEVED OPENINGS WITH THE TOP EDGE RAISED ABOVE FLOOR SURFACE IN ACCORDANCE WITH ALL RELEVANT SPEC SECTIONS. SEAL SLEEVE PERIMETER TO BE WATERTIGHT.
  - EQUIPMENT SIZES AND SERVICE CLEARANCE REQUIREMENTS VARY AMONG DIFFERENT MANUFACTURERS. CONSULT APPROVED SHOP DRAWINGS FOR EQUIPMENT SIZES AND REQUIRED SERVICE CLEARANCES. COORDINATE WITH LAYOUT OF EQUIPMENT PADS, PIPING, DUCTWORK, ETC.
  - DO NOT BLOCK TUBE PULL OR EQUIPMENT SERVICE CLEARANCES.
  - MAINTAIN MINIMUM 3'-6" CLEARANCE IN FRONT OF ALL ELECTRICAL PANELS, MOTOR STARTERS, SWITCHES, AND DISCONNECTS.
  - PROVIDE CONCRETE EQUIPMENT PAD FOR ALL FLOOR MOUNTED EQUIPMENT. PAD SHALL EXTEND MINIMUM 6" BEYOND ALL SIDES OF EQUIPMENT.
  - DO NOT SUPPORT EQUIPMENT, PIPING, OR DUCTWORK FROM METAL DECKING OR OTHER NON-STRUCTURAL BUILDING ELEMENTS. ANCHORS EMBEDDED IN CONCRETE SHALL BE CRACKED CONCRETE APPROVED IN ACCORDANCE WITH SPECIFICATIONS.

**BOILER SCHEDULE - HOT WATER**

NOTES:  
1. INSTALL BOILER PER BOILER MANUFACTURER INSTALLATION REQUIREMENTS.

TAG NAME	MAX. DIMENSIONS				FUEL	INLET FUEL PRESSURE (IN. W.C.)	TURNDOWN RATIO	INPUT MBH	OUTPUT MBH	EWT °F	LWT °F	OPERATING PRESSURE PSI	VOLTAGE	PHASES	ELECTRICAL			MANUFACTURER	MODEL	NOTES	
	LENGTH	WIDTH	HEIGHT	DISCONNECT											CONTROLLER/ STARTER						
															BY (NOTE A)	TYPE (NOTE B)	BY (NOTE A)	TYPE (NOTE A)			
B-2	35	24	46		NG	8	20:1	500	465	140	110	30	115	1	E.C.	-	MFR		RBI	IE 500	NOTE 1

**PUMP SCHEDULE**

NOTES:  
1. INSTALL PUMP PER MANUFACTURER'S REQUIREMENTS.

TAG NAME	GPM	PUMP FT. HEAD AT DESIGN	VOLTAGE	PHASES	ELECTRICAL (NOTE 1)			MANUFACTURER	MODEL	NOTES
					DISCONNECT	CONTROLLER/ STARTER				
					BY (NOTE A)	TYPE (NOTE B)	BY (NOTE A)	TYPE (NOTE C)		
P-4	30.0	40.00	115	1	EC	-	MC	MF	GRUNDFOS	UPS 40-160 F. NOTE 1.



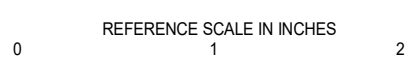
PROFESSIONAL SEAL

KEY PLAN

AGENCY APPROVAL

DISCLAIMER

IMEG CORP. RESERVES PROPRIETARY RIGHTS, INCLUDING COPYRIGHTS, TO THIS DRAWING AND THE DATA-BASED THEREON. SAID DRAWING AND/OR DATA ARE THE EXCLUSIVE PROPERTY OF IMEG CORP. AND SHALL NOT BE REPRODUCED OR REPRODUCED FOR ANY OTHER PROJECT WITHOUT THE EXPRESS WRITTEN APPROVAL AND PARTICIPATION OF IMEG CORP. © 2018 IMEG CORP.



REVISIONS

No.	Date	Revision / Issue

SHEET INFORMATION

Issue	Construction Set
Date	12/12/2018
Job Number	18001186.00
Drawn	PAUHAN
Checked	PAUVAD

SHEET TITLE

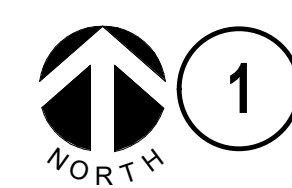
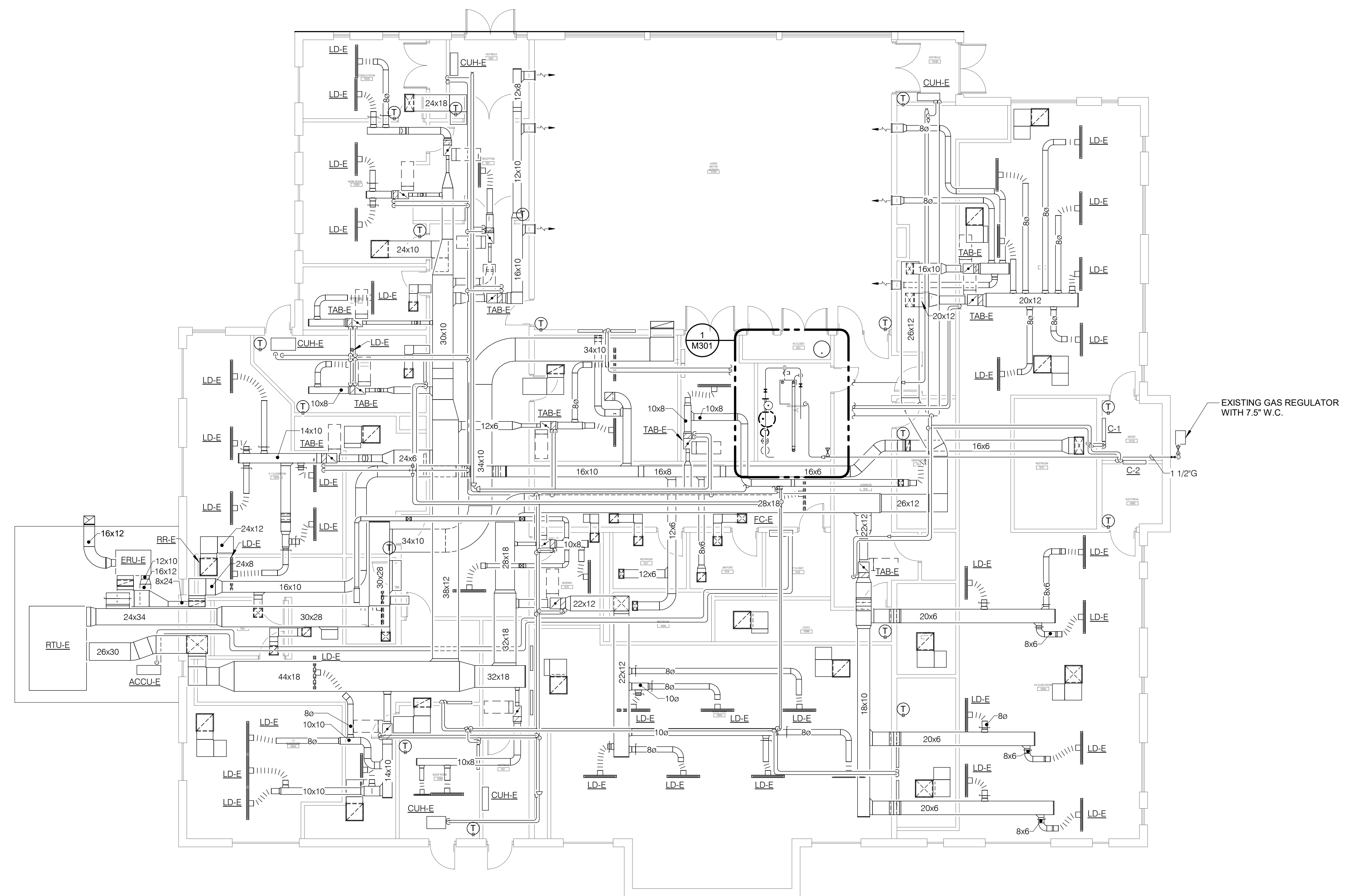
FIRST FLOOR PLAN - MECHANICAL-DEMOLITION

SCALE

Scale: 1/8" = 1'-0"

SHEET NUMBER

M101



**1 FIRST FLOOR PLAN - MECHANICAL-DEMOLITION**

1/8" = 1'-0"



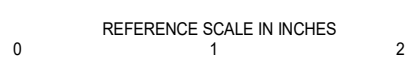
PROFESSIONAL SEAL

KEY PLAN

AGENCY APPROVAL

DISCLAIMER

IMEG CORP. RESERVES PROPRIETARY RIGHTS, INCLUDING COPYRIGHTS, TO THIS DRAWING AND THE DATA-BASED THEREON. SAID DRAWING AND/OR DATA ARE THE EXCLUSIVE PROPERTY OF IMEG CORP. AND SHALL NOT BE REPRODUCED OR RE-USED FOR ANY OTHER PROJECT WITHOUT THE EXPRESS WRITTEN APPROVAL AND PARTICIPATION OF IMEG CORP. © 2018 IMEG CORP.



REVISIONS

No.	Date	Revision / Issue

SHEET INFORMATION

Issue	Construction Set
Date	12/12/2018
Job Number	18001186.00
Drawn	PAUHAN
Checked	PAUVAD

SHEET TITLE

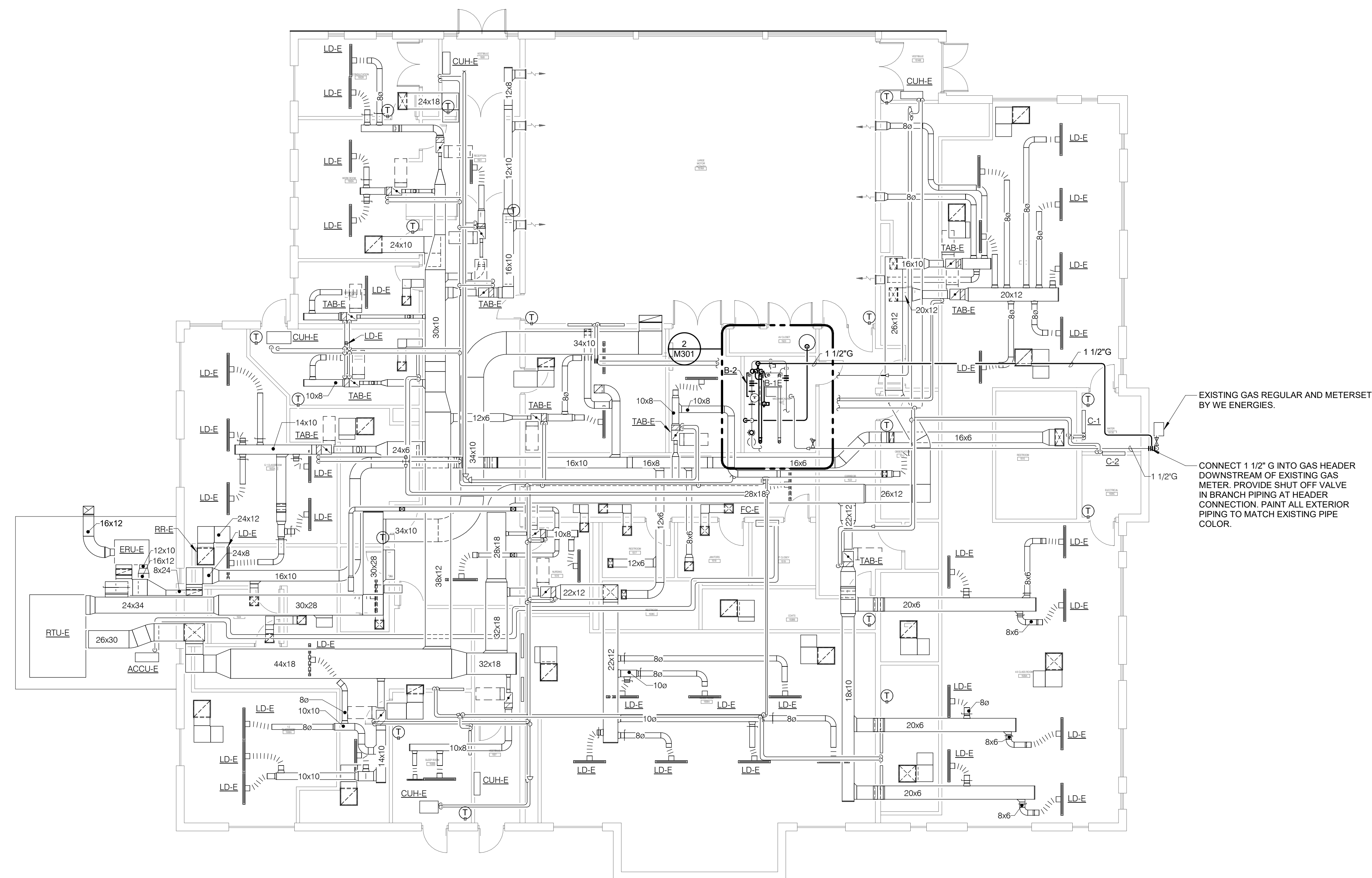
FIRST FLOOR PLAN - MECHANICAL

SCALE

Scale: 1/8" = 1'-0"

SHEET NUMBER

M201



1 FIRST FLOOR PLAN - MECHANICAL

1/8" = 1'-0"



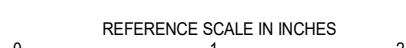
PROFESSIONAL SEAL

KEY PLAN

AGENCY APPROVAL

DISCLAIMER

IMEG CORP. RESERVES PROPRIETARY RIGHTS, INCLUDING COPYRIGHTS, TO THIS DRAWING AND THE DATA, KNOWLEDGE, SKILL, DESIGN AND/OR DATA ARE THE EXCLUSIVE PROPERTY OF IMEG CORP. AND SHALL NOT BE REPRODUCED OR TRANSMITTED IN ANY FORM OR BY ANY MEANS WITHOUT THE EXPRESS WRITTEN APPROVAL AND PARTICIPATION OF IMEG CORP. © 2018 IMEG CORP.



REVISIONS

No.	Date	Revision / Issue

SHEET INFORMATION

Issue	Construction Set
Date	12/12/2018
Job Number	18001186.00
Drawn	PAUHAN
Checked	PAUVAD

SHEET TITLE

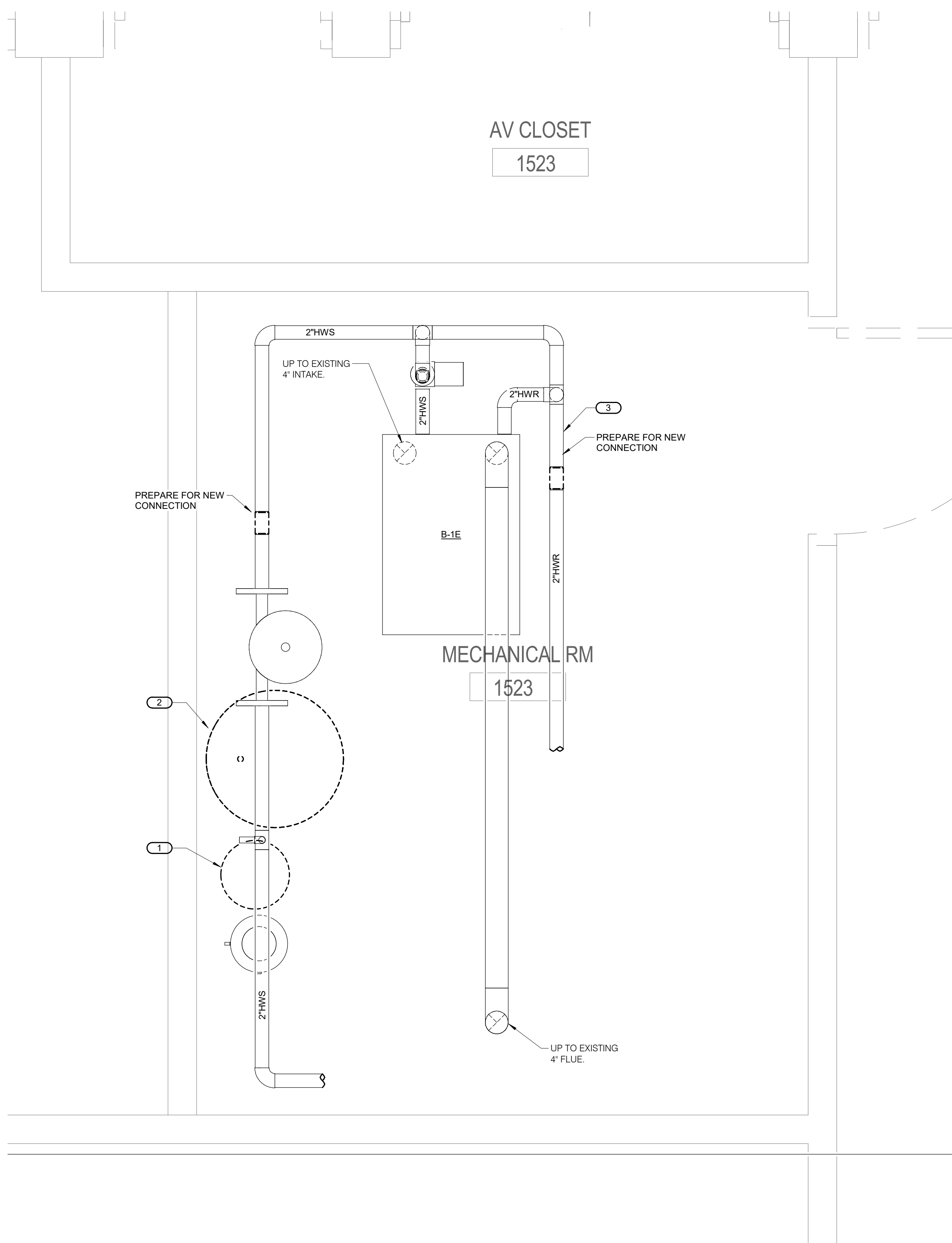
ENLARGED FLOOR PLANS - MECHANICAL

SCALE

Scale: 1" = 1'-0"

SHEET NUMBER

M301



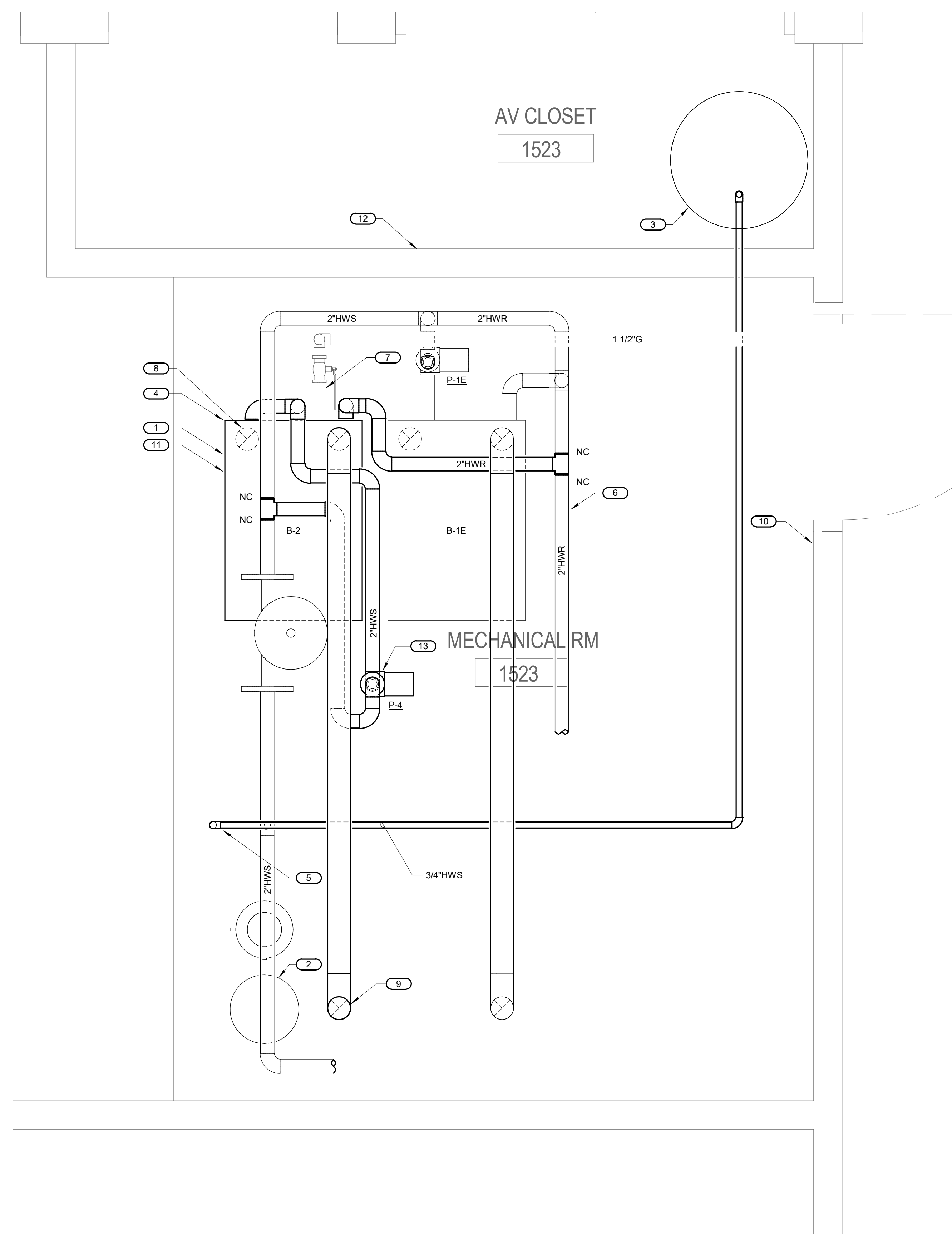
1

**ENLARGED DEMOLITION PLAN - MECHANICAL**

1" = 1'-0"

**KEYNOTES:**

1. REMOVE EXISTING SIDESTREAM FILTER AND PREPARE EXISTING FILTER TO BE INSTALLED IN NEW LOCATION PER 2/M301
2. REMOVE EXISTING EXPANSION TANK AND PREPARE EXPANSION TANK TO BE INSTALLED IN NEW LOCATION PER 2/M301. PREPARE BRANCH SERVING EXPANSION TANK FOR NEW EXPANSION TANK CONNECTIONS PER 2/M301.
3. REMOVE EXISTING HWR TEMPERATURE SENSOR AND THERMOMETER AND PREPARE SENSORS FOR REINSTALLATION IN NEW LOCATION PER 2/M301.



2

**ENLARGED FLOOR PLAN - MECHANICAL**

1" = 1'-0"

**KEYNOTES:**

1. CONTRACTOR SHALL INSTALL NEW BOILER. CONTRACTOR TO INSTALL CONTROL WIRING BETWEEN EXISTING BOILER (B-1) AND NEW BOILER (B-2) SO BOILERS HAVE CONTROL TOGETHER VIA CASCADE CONTROL SEQUENCE WITH LEAD/LAG ALTERNATING ABILITY. CONTRACTOR SHALL INSTALL CONTROL WIRING TO P-4 FROM INTEGRAL BOILER CONTROL PANEL TO ENERGIZE BOILER CIRCULATION PUMP (P-4) WHEN BOILER (B-2) IS OPERATING.
2. INSTALL EXISTING SIDESTREAM FILTER TO SOUTH OF EXISTING POT FEEDER. EXTEND EXISTING PIPING SERVING SIDE STREAM FILTER TO NEW FILTER LOCATION. SIDESTREAM FILTER CAN BE INSTALLED ON EXISTING FLOOR.
3. INSTALL EXISTING EXPANSION TANK IN STORAGE ROOM ON 4" HOUSEKEEPING PAD. EXPANSION TANK SHALL BE INSULATED WITH 2" OF RIGID FIBERGLASS INSULATION AND A 5 LAYER SELF ADHERING JACKET (VENTURE CLAD OR EQUAL) TO PROTECT INSULATION.
4. EXTEND EXISTING HOUSEKEEPING PAD FOR NEW BOILER INSTALLATION.
5. EXTEND EXISTING HWS PIPING FROM EXISTING EXPANSION TANK CONNECTION TO NEW LOCATION IN STORAGE ROOM.
6. INSTALL EXISTING HWR TEMPERATURE SENSOR AND THERMOSTAT REMOVED PER 1/M301 TO NEW LOCATION UPSTREAM OF BOILER BRANCH PIPING.
7. CONNECT 1 1/2" G PIPING TO BOILER PER BOILER MANUFACTURER REQUIREMENTS. PROVIDE MINIMUM 6" DIRT LAG AND SHUT OFF VALVE AT BOILER.
8. ROUTE 4" INTAKE TO ROOF AND TERMINATE PER MANUFACTURER REQUIREMENTS.
9. ROUTE 4" FLUE TO ROOF AND TERMINATE PER MANUFACTURER REQUIREMENTS.
10. M.C. SHALL COORDINATE WITH E.C. FOR INSTALLATION OF CSD-1 EMERGENCY DISABLE SWITCH TO DISABLE BOTH BOILER B-1 AND BOILER B-2 WHEN SWITCH IS ENABLED.
11. CONTRACTOR SHALL CONNECT GENERAL ALARM FROM BOILER TO EXISTING BUILDING'S TRANE CONTROL SYSTEM.
12. EXISTING BOILER ROOM CONTAINS A ONE HOUR FIRE RATING. CONTRACTOR SHALL PROVIDE FIRESTOPPING ON NEW PENETRATIONS PER SPECIFICATION 23 05 03.
13. CONTRACTOR SHALL INSTALL PUMP FURNISHED BY OWNER. CONTRACTOR TO INSTALL PUMP IN ACCESSIBLE LOCATION NOT ABOVE BOILERS.

